

Hepworth Herald

Issue 10 ~ April 2019



Laurie Shearer

A ROOM WITH A ●



view

REPLACE
ALL THE
WINDOWS IN A
TYPICAL 3 BEDROOM
SEMI-DETACHED FOR
AS LITTLE AS
£64.37
PER
MONTH



Representative example. Cash price £5,809.96. NO DEPOSIT. Total amount of credit £5,809.96. Duration of agreement: 120 monthly payments of £64.37. Rate of interest 3.2% pa variable. 5.9% APR representative. Total amount payable £7,726.80. Credit is subject to status and application. Frames Conservatories Direct Ltd is a credit broker (FRN 6687000) for the purpose of introducing the credit provided by Hitachi Personal Finance, a trading style of Hitachi Capital (UK) PLC (Register no. 704348). Both are authorised and regulated by the Financial Conduct Authority.

★★★★★ MULTI AWARD-WINNING

Frames  **Conservatories**

Your Complete Home Improvement Centre *Direct*

Call 01379 629407

or visit our website www.fcdhomeimprovements.co.uk

Technology is moving at a fast pace its hard to keep up with everything.

Do you need help with.....

Purchasing laptops, Tablets, 2 in 1, WiFi setup, Internet, Training, Printing

Silver Surfer Training

ken.mckenzie1234@gmail.com

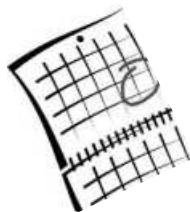
01379640580

Mobile 07446477054

1 Hall Farm

Wortham, Suffolk, IP22 1SL

Confused with computers, laptops, tablets, internetgive me a call



What's On?

There are lots of events planned in the village during the year - these are the ones we know about at the moment. Please share any others you have planned.

Hepworth Angels	Mondays@1930	see page 8
Café Hepworth	1st & 3rd Thur.	see page 7
Annual Parish Meeting	4th April	see page 10
Hepworth2Enjoy Meeting	12th April	@8pm (see p18)
Morning Prayer	14th April	0930@St Peter's
Holy Communion	21st April	0930@St Peter's
St Georges Day Lunch	27th April	see page 19
Holy Communion	28th April	0930@St Peter's
Closing date for Sign Designs	1st May	see page 5
Annual General Meeting	9th May	Hepworth Pavilion
Cheese & Wine Night	8th June	} see page 18 - } info to follow
Bingo & Buffet	14th Sept	



Would you like to help?

Many village events are being supported by **Hepworth2Enjoy**. This is an engaged, friendly collective of Hepworth villagers who come together to put on village events and to help others put on village events, providing people-power, experience, and bags of enthusiasm! We now have a small budget to help events on their way. We are always looking for ideas & volunteers - please contact Clare (250 660) or Sue (250 037).

Hepworth Allotment Scheme

A number of parishioners have registered their interest in having an allotment in the village. The Parish Council is moving forward with the scheme, and is currently looking for a suitable site. If you, or anyone you know, has a piece of land they would be willing to put forward for this scheme please contact the Clerk on 01359 250037.



PETER GODDARD FIREWOOD



HARDWOOD FIREWOOD
AVAILABLE FOR
DELIVERY ALL YEAR

Tel: 01359 221 287
Mob: 07946 595 126

TIME FOR YOU™

DOMESTIC CLEANING

Reliable - Weekly - Insured - Cleaners




We clean so
you don't have
to!

Call us on
01359 258991



Typically £12 per hour

 www.timeforyou.co.uk
suffolk@timeforyou.co.uk



YOUR LOCAL FRIENDLY
INDEPENDENT FUNERAL DIRECTORS

Personal service and attention to detail are our hallmark. So, when you are faced with arranging a funeral, let us take care of the details 24 hours a day, 7 days a week.

We can talk to you on the phone, at our branch or in your home - you are under no obligation.

5b Kings Road,
Bury St Edmunds IP33 3DJ

01284 769200

Email: bury@rhcfunerals.co.uk

PARKING AVAILABLE



Did you know?

The Parish Council has prepared a Welcome Pack for people new to the village.

Do you have a new neighbour?

Copies from
Sue on 01359 250 037
and can also be found on the
Village Website at

<http://hepworthvillage.co.uk>

Village Sign Design Competition

Sadly, despite a recent renovation, our village sign is beyond repair. However, this provides a wonderful opportunity for all you budding artists and designers out there to design a new sign for Hepworth. The sign must represent Hepworth in some way.

Please draw your design in colour on an A4 sheet of paper and mount it on card. Please accompany your design with a small explanation as to what you would like your sign to be made of and the reasons behind your design.

The closing date for all entries is 1st May 2019. Entries to be given to Louise Robinson, Bakery Cottage, Church Lane.

The designs will be displayed at the Parish Council AGM at the recreation Hall on Thursday, 9th May 2019 where you, the villagers, can vote for your favourite design.

The winning design will be made and the winner will have the honour of unveiling their design at a future date.



BARNINGHAM CEVC PRIMARY SCHOOL

Church Road, Barningham, Bury St. Edmunds, Suffolk IP31 1DD

Tel 01359 221297 e-mail admin@barningham.suffolk.sch.uk

WANTED – CO-OPTED GOVERNOR

The school are currently looking for a co-opted governor to join our friendly governing body.

Our governors come from a range of different backgrounds, skills and experience but all share a common interest of wanting the best possible education for the children in our school.

Why become a school governor? As a governor you can:

- make a difference in your local community
- develop your skills and experience
- improve your knowledge about the education sector

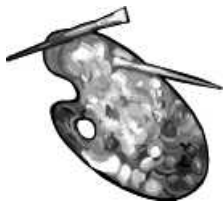
A good governor should:

- gain a good understanding of the school's strengths and weaknesses
- contribute to the strategic discussions at governing body meetings
- hold the senior leaders to account by monitoring the school's performance

For more information visit:

<https://www.suffolk.gov.uk/children-families-and-learning/schools/govern-suffolk/>

or call the school on 01359 221297.



Hepworth Art News

Although cold outside, every Monday there has been a warm and productive energy buzzing in the Pavilion. Many of the members have produced some 'masterpieces'. Our subject matter has ranged from Reflection to Life Drawing. I am still not too sure whether the group was disappointed that the model was clothed! The first quarter of our painting year has drawn to a close and we are looking forward to a warm and sunny spring to inspire us. On April 1st the subject is 'All in the April Evening' – inspired by Clare who leads Hepworth Angels. The singers valiantly practiced and practiced to get it right....almost! For the art club then, it is ..'the sheep with their little lambs'.

Abstract painting, chicken and eggs and even creating a poster for your favourite place or your village. We are also hoping to have a guest artist provide a Pastel Workshop in May. Also in May, Bluebell woods – pure inspiration!

Caroline and her husband are arranging another coach trip to London to see the Van Gogh Exhibition at The Tate - On 13th June, The luxury coach (with loo) will be door to door from Hepworth. There are some seats available and if you are interested, please contact me – details below.

Annual Exhibition is being planned! Please reserve in your diary the dates for our Annual Exhibition – Saturday 5th and Sunday 6th October. See how many sheep and little lambs you can spot!

wendy.summerell@btinternet.com Tel: 01359 251852

Village Pancake Race



Despite grey skies and a stormy morning, at 4pm on Sunday 10th March an intrepid band of Hepworth villagers gathered on the playing field – eager and dressed for arctic conditions. Fortunately the worst of the conditions cleared in time for the Great Hepworth Pancake races! After some flipping practice and trial runs, the

races got underway. The winners were:

Ron (Mens category); Rowan (Boys); Neeve (Girls); Claire (Ladies).

Having expended so much energy, everyone was ready for the stacks of pancakes and tea waiting in the Pavilion with the added bonus of a delicious variety of fillings, provided by H2E friends.



Thank you everyone who come to the Lent Lunch on the 14th. I'm pleased to say that we raised **£134.50**.

I couldn't have done it without Tama and Eileen
- thanks girls!

Maureen Bacon



We are a local, informal, friendly garden club. Green Fingers meetings are held at Hinderclay Village Hall on the 3rd Wednesday of each month at 1930 in the evening. Annual membership subscription is £12 and our monthly meeting fees are £2 for members (and £4 for non-members) with refreshments included. You would be most welcome to join us.

17th April

Hanging Basket Workshop

15th May

Garden Visit to Moat House at Risby/Saxham

22nd June

Peter Beales 'Festival of the Rose' (Saturday), by Cars to Attelborough

17th July

Garden Visit to 5, Parklands Green at Fornham St, Genevieve + much, much more.

For more information, ring

Ali Carr: 01953 688112 or Val Hobson: 01359 251977

Café Hepworth



1st & 3rd Thursday
of each Month in
Hepworth Pavilion
between 10.30 – 12.00

Proper Coffee and Biscuits for £1.50

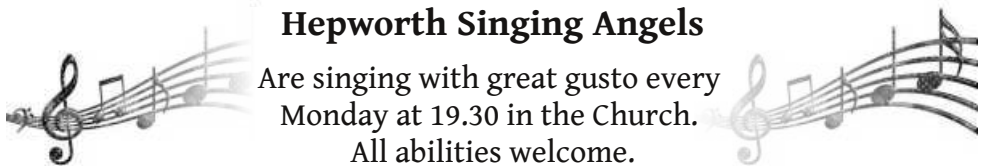
All Welcome!

Sell your unwanted things here,
or advertise for articles wanted.
Please contact the advertisers
directly to enquire about items.
Deadline for new adverts is the
17th May 2019.



Hepworth Singing Angels

Are singing with great gusto every
Monday at 19.30 in the Church.
All abilities welcome.



IT SUPPORT FROM JUST A SMALL THING

A local problem solving service designed to help you get the most out of your computer, laptop, phone, printer, and more.

Neel Shearer

✉ its@justasmallthing.co.uk

☎ 07930 606509

🌐 <http://its.justasmallthing.co.uk>

- 20 years experience with IT
- DBS checked and happy to show identity your peace of mind.

WEB HOSTING
FROM ONLY
£5 PER MONTH
OR CALL ME ABOUT
DESIGNING YOUR
NEW WEBSITE



Letter from Reverend Bladen April 2019

Dear Friends and Neighbours,

By the time the magazine arrives on your doormats we will be almost half way through Lent. Lent is a strange kind of time ...and in many ways it seems to be going out of fashion. There was a time when everyone would be discussing what they would be giving up for Lent... anything from chocolate to wine, caffeine, sugar...etc; I wonder if perhaps it's because it's not understood.

Historically Lent was a solemn time when Christians fasted and gave up things they enjoyed in order to help them concentrate and prepare to remember Holy Week... to remember the death of Jesus on the Cross and then to prepare to celebrate Jesus resurrection on Easter Sunday. And today many Christians still use this season of Lent as a time of reflection and preparation. In this age of mindfulness Lent gives us a perfect opportunity to pause to take time to reflect on life and how we're journeying through it. Jesus said that He came that we might have abundant life... full and overflowing (John 10:10). Lives lived like that come out of knowing who we are and who we're designed to be... There's also a wonderful peace and quiet joy that comes out of knowing that we are truly loved and loved just as we are... that I believe is what Jesus did for us that first Easter. By dying on the cross so that all our sins might be forgiven He opened up for us a new way of being... a new way of living and the possibility of a new way of life.

During what is left of this Lent season you might like to take time to pause and reflect on the love that God has for each one of us, and the promises that God makes to us. You might like to read and think through the bible passages in Mark's gospel chapters 14,15 and 16 and see all that Jesus did to declare that love to us. And then perhaps you might like to join us at one of our Easter Sunday services as we celebrate Jesus' victory and His rising from the dead and all that that new life could mean to us.

The details of all the services across Holy Week and Easter Sunday are in the magazine... it would be great to see you at one of them. And if you'd like to chat about what new life as a Christian might look like please do get in touch with me, I'd love to have a chat with you.

Have a thoughtful Lent and a Very Happy Easter.

God Bless

Cathy (The Rector)

Hepworth Annual Parish Meeting



**Thursday, 4th April @1900
Hepworth Pavilion**

A Fun, Social Event for the whole Village!

The evening will start at 7.00pm with a very entertaining talk by Mike Wabe, Thetford Town Crier (who will be in full regalia). This will be followed by free refreshments at 8.00pm and the Annual Parish Meeting commencing at 8.15pm. There will be information available on local groups and clubs.

Come along and find out what is going on in your village and have your say about what you would like to see happening in the future.

For more details contact the Clerk on 01359 250037.

Hepworth Lottery

Date	First Prize	Second Prize	Third Prize
12/1/19	Poplars	Ingham	Butchers House
19/1/19	Roberts	17 The Street	33 Church Close
26/1/19	Randall	H Shelley	17 The Street
02/2/19	7 Church Close	Autumn Cottage	Grove House
09/2/19	Thompson	29 Church Close	Butchers House
16/2/19	17 The Street	Poplars	Ingham
23/2/19	10 Church Close	22 Church Close	Roberts
02/3/19	Tina	Adrian	Corringway

For more information about Hepworth Lottery, call 01359 250 048

BATTLE'S OVER



A NATION'S TRIBUTE

11TH NOVEMBER 2018

100 YEARS OF REMEMBRANCE

Hepworth Remembers

Harry Vincent Filby

Harry, known more widely as Vincent (his father was also Harry) was born in 1893 in Hepworth. By 1911, the family was living at Dunhill Lane, and Harry was an apprentice wheelwright. He married Agnes Emma Claydon in 1915, just before being posted in May 1916. He was transferred to the 15th Battalion, stationed in Calais in July 1918, and died 3 weeks later from gunshot wounds, aged 25. He is buried in Aire, St Omer in Calais.

He is remembered on the Hepworth Memorial and the Bardwell Memorial, and on his parents gravestone in Hepworth Churchyard. The Filby family are recorded in Hepworth as far back as 1768, when Harry's Great, great, great grandparents were married in St Peter's. Agnes's brother (George Egbert Claydon) died 2 months after Harry, and she moved away from Hepworth.

Alfred George Fisk

Alfred was born in Gislingham in 1892. He was one of 8, including his brother Ernest (below). The family moved to Rectory Road in Finningham the following year. In 1911, the family is living in Hepworth, near Hepworth Hall, and all the men are labourers on a farm. Alfred was killed in action on 28th April 1917 in France, aged 25. His name is on the memorial at Arras, along with more than 34,000 others.

His older brother, David, married and had a daughter born in Hepworth in 1922. His sister Mabel's husband served, survived and had a family, whilst living in Ixworth. His mother died in 1938. His father, Amos Fisk was still living on North Common in 1939, with his son (Alfred's and Ernest's brother) Arthur, who in turn died in Hepworth in 1972.

Ernest James Fisk

The younger brother of Alfred (above), Ernest, recorded as 'James', was born in 1896 in Finningham. He enlisted in Bury St Edmunds, and there seems to be a little confusion in the records, recording him as both EJ and JE Fisk. In addition, the Suffolk Regiment shows 3 different numbers for him - 5819667, 10077 and 23688. He died at Flanders, The Somme, France on 29th August 1916, aged just 20. His name is on the Theipval Memorial along with over 72,000 other casualties.

HEPWORTH PARISH COUNCIL - DRAFT MINUTES

A meeting of the Hepworth Parish Council took place on Thursday 7th March 2019 at the village hall where the following items were discussed:

Attendees	Mr D Stannard (Chair)	Mr A Yorke (Vice Chair)
	Mrs N Yorke	Mrs M MacPherson
	Ms L Robinson	Cllr J Spicer
	Mr G Bloomfield	Mrs S Yeomans (Clerk)

Members of the Public: There were 6 members of the public present and the Tree Warden

1. Apologies: Mrs R Vernon, Mrs M Waterson, Cllr C Bull
2. Declarations of Interest: There were none
3. Minutes of previous meetings: The minutes of the Meeting 3rd January 2019 and Extraordinary Meeting 22nd February 2019 were agreed and signed.
4. Matters arising from previous meetings:
 - i. Allotments – A landowner has expressed an interest in offering land for use as allotments. A meeting to be set up.
 - ii. Village Sign replacement – Adrian Rumbles, local artist presented an initial design in steel, for longevity. It was proposed the sign be sited in a more prominent position, so that it could be seen travelling from both directions. Wood Lane was suggested.
 - iii. It was agreed to put an advertisement in the Hepworth Herald announcing a competition to design a new sign in wood or metal, Entries by 1 May.
 - iv. Annual Parish Meeting – Clerk to finalise arrangements with participants.
 - v. Shepherds Grove Development – see below in public report
 - vi. Trees in Remembrance Planting Scheme – The Tree Warden suggested sighting the trees along the back boundary of the playing field. Cllr Stannard, Cllr Bloomfield and Tree Warden to meet and review suitable site.
5. Receive reports and hear from members of the public present
 - i. Report from Cllr Spicer:
 - a. Suggested the PC draft and submit a letter to the Shepherds Grove Developers outlining the concerns of the parishioners and the Parish Council. Stanton Parish Council will be discussing the development at their next PC Meeting when Cllr Spicer will express Hepworth's concerns.
 - b. JS is still chasing replacement of the 40mph VAS on the A143.
 - c. School Transport – letters sent out on 1st March 2019 with offers of school places. Those taking the Thurston option have no transport provided but other options have been provided. Anyone with any concerns should contact Cllr Spicer direct.
 - ii. Report from Cllr Bull – report read in her absence
 - a. Shepherds Grove Development - Can you kindly please assure everyone that what they are seeing at present is a Masterplan which is the first stage in the application process. The developer is required to consult on this and everyone should be encouraged to provide feedback. I am always happy to talk through all this if anyone wishes to contact me.
 - iii. Members of the Public
 - a. Shepherds Grove Development – 5 members of the public expressed their concerns regarding

- the increase in volume of traffic – traffic calming scheme and average speed cameras requested; HGV's - request weight restriction; infrastructure – capacity of schools and doctor's surgery, lack of pavements – impacted by increase volume of traffic. The PC will send a letter to the developers taking into account all the concerns expressed. Clerk to contact Cllr Bull and find out time frame for Draft on Outline View.
- b. A complaint was made about Chapman's HGV vehicles coming through the village. Cllr Spicer thought a planning application submitted about 5 years ago set out their right of use. A member of the public to check the planning application and forward to Cllr Spicer.
6. Finance: The following accounts for payment were agreed: -Chq 930 – Clerks Salary Dec 18-Jan 19 - £415.40; Chq 931 – SALC, Election Briefing (Clerk) - £30.00; Chq 933 - Clerk, Expenses Jan-Feb 19 - £105.00; Chqs 932 and 934 were cancelled. It was agreed not to renew the subscription to The Suffolk Preservation Society. It was agreed to appoint SALC as Auditors at a fee of £145.00 + VAT. It was agreed to purchase 2 x The Good Councillor Guides at £3.50 each plus postage. It was agreed to purchase a 6 Panel Display Board plus carry bag at £120.75 + VAT. It was agreed to purchase 10 'Dog Poo warning signs' at £29.50 + delivery and VAT
 7. Parish Elections – 2 May 2019: Councillors wishing to be nominated for re-election have been given Nomination Packs. Anyone interested in standing for the Parish Council should contact the Clerk on 01359 250037 for further details and Nomination Pack asap.
 8. Risk Assessment and Asset List - The updated Risk Assessment reviewed on 3 March 2019 was agreed and approved. The Asset List, with no recent amendments, was approved.
 9. Clerk's/RFO Report: 1. Bank Balances @ 7th March 2018: Community (current) account £4,266.44. Business Saver account £1,832.21. 2. Speed Watch Sessions JAN: 19/01/19 = 8 FEB: 16/02/19 = 1. 31/01/19 = 2 26/02/19 = 4 3. Clerk attended an Election Briefing and an Allotment Management Course.
 10. Planning Applications - There were no planning applications.
 11. Footpaths: Market Weston Road – Cllr Yorke, Cllr Stannard and the Clerk met with the Community Liaison Engineer and it was agreed we could go ahead and organise a working party to clear the path. Cllr Stannard to cost hire of a small digger. Cllr Spicer offered funding towards cost. The Clerk reported a broken-down Footpath sign on footpath No. 2 on 26th February 2019.
 12. Highways: Cllr Bloomfield expressed concerns about the state of the road between Stanton and Hepworth heading towards Diss. Cllr Spicer said this would be part of planned repairs. Cllr Bloomfield reported the ditch, along the lay-by on the A143 just outside Hepworth had been cleared but a lot of rubbish has been left in the lay-by. Clerk to report. A parishioner (not present) has asked that a raised triangle be placed at the top of The Street, exiting onto the A143 as people coming from Diss and turning right into The Street regularly cut the corner. Cllr Spicer to look at possible options with her engineer. The Clerk reported the damaged Beck Street sign on 4th February 2019 The Street sign at the top of the road near the A143 is damaged.
 13. Correspondence - There was no correspondence
 14. Questions to the Chair - There were no questions
 15. Any other business - There was no other business
- The meeting closed at 9.50pm
- Annual Parish Meeting 4th April 2019. Annual General Meeting *NEW DATE* 9th May 2019

THE REAL HOUSEWIVES OF HEPWORTH VILLAGE

(A tongue in cheek, long-suffering farmer's wife view of life on the farm. We left our housewife contemplating "The Show" and the preparations required for attending it)

Turning to footwear, not wearing heels is not an option; after all, looking the part is what it's all about, and I don't get to dress up very often. Well, I could, but it wouldn't last long in the pigs, and the kind of workout I give my work clothes is a tough one! Anyway, I digress. I have learnt from painful past experience to carry a pair of flatties in my bag, so when the glamorous look loses over the pain in my feet, I slip them on and then ponder as to why my calves have not lowered themselves with the shoes. The first year I did "The Show" I endured high heels all day until I could stand it no longer, and abandoned heels completely, walking barefoot. This proved to be a bad move at the end of a day at a showground strewn with rubbish etc.

Moving on to the day, departure time, or ETD, as Him Outdoors calls it (I'm not sure if "Show Time" has a military operational name) but it is treated as though it is. The truck gets it's yearly clean and muck-out the day before, and clothes are ironed and laid out in anticipation of the next day. Him Outdoors attends to his toilette painstakingly, and for a man not usually given to being overly concerned about his appearance, other than worrying if he has a clean pair of overalls, the transformation is all encompassing.

In the bunk house, reveille is at five; I struggle out of bed to the kettle, fortify myself with tea and psyche myself up to shower, dress, apply make-up and so on and so forth. Normally dressing takes two minutes: I just throw on my trackies and sweat shirt, rake a brush through my hair, clip it up and apply moisturiser, as the pigs don't seem to be fashion conscious. This extraordinary task of getting "dolled-up" is grudgingly executed with copious amounts of tea. I am under orders not to drink too much tea as he won't stop on the way for a toilet break. That's what you think Ha! Ham and cheese rolls and a flask of coffee are made, and I am, as ever, aware of his view that this is breakfast, which is to be eaten on arrival at the Show. Friends arrive and we set off, exactly two hours later. Settling ourselves for the journey, we break out the goodies within ten minutes of leaving. Consumption of food en route is not normally an appetising thought at any other time of the year due to the straw, dust, discarded jackets, boots, dochy bags, newspapers and anything else we can't normally find, which has accumulated in the truck. However, the clean surroundings and good company make this the start of a good day out.

.....To be continued



Along The Street:

January 2019: 2 Sessions, 10 vehicles logged. Max. speed = 48 mph

February 2019: 2 Sessions, 5 vehicles logged. Max. speed = 38 mph

Since our last report we are now able to monitor the speeds of vehicles leaving the village as well as arriving into the village.

Arriving from Barningham end of The Street, Hepworth

Reports of data for 3½ weeks from of 8th January to 3rd February.

Total number of vehicles: - 6,672

Average speed for ALL vehicles:- 32 mph

% between 21 and 30 mph:- 65% % between 31 and 40 mph:- 26%

% between 41 and 50 mph:- 1% % between 51 and 60 mph:- >1%

No. of incidents of 60mph to 70mph: 0 Highest speed recorded: 53mph

Leaving toward Barningham on The Street, Hepworth.

Total number of vehicles: - 6,488

Average speed for ALL vehicles:- 34 mph

% between 21 and 30 mph:- 58% % between 31 and 40 mph:- 34%

% between 41 and 50 mph:- 1% % between 51 and 60 mph:- >1%

No. of incidents of 60mph to 70mph: 1 Highest speed recorded: 60mph

Arriving into the village from A143 end of The Street, Hepworth.

Reports of data for 5 weeks from 3rd February to 11th March.

Total number of vehicles: - 13,699

Average speed for ALL vehicles:- 34 mph

% between 21 and 30 mph:- 62% % between 31 and 40 mph:- 34%

% between 41 and 50 mph:- 1% % between 51 and 60 mph:- >1%

No. of incidents of 60mph to 70mph: 2 Highest speed recorded: 61mph

Leaving the village toward the A143 on The Street, Hepworth.

Total number of vehicles: - 12,835

Average speed for ALL vehicles:- 36 mph

% between 21 and 30 mph:- 42% % between 31 and 40 mph:- 51%

% between 41 and 50 mph:- 3% % between 51 and 60 mph:- >1%

No. of incidents of 60mph to 70mph: 5 Highest speed recorded: 65mph

For more information about Speedwatch, or to get involved, call Richard on 250 484

Neighbourhood Watch Scheme your village needs you!



The Parish Council have been made increasingly aware of antisocial incidents occurring in the village over recent months. A few examples are as follows:-

A man was approached by two masked men while he was outside of the property. They grabbed him, threatened him and forced him inside, where they then conducted a search and stole keys, an amount of cash and a mobile phone. The victim was punched several times to the head and sustained a broken wrist.

People have been caught on CCTV camera wandering around private properties, staring in the windows and even urinating in the garden. Walking dogs through private property, allowing the dog to poo and not picking it up. People walking through private property during a family barbecue. Driving vehicles on private property nearly injuring the resident. Attempted theft of a horse lorry. Honesty boxes being raided, eggs being stolen, damage to produce stands. Damage to car and contents stolen.

Cyclists appear to be carrying out un-official speed trails on their road bikes around our lanes and horse riders are experiencing problems. Horse riders are also regularly subjected to abuse, often stating they should not be on the roads.

These are just the incidents that have come to the attention of the PC, I am sure there are many more we are not aware of. If you are aware of other incidents please contact either Louise or the Clerk as we would like to compile a record of events.

These incidents highlight the need for a Neighbourhood Watch (NW) Scheme in Hepworth. Cllr Louise Robinson is happy to form a NW group, and once volunteers are identified the aims and objectives of the scheme can be set out.

It should be stressed that joining the scheme would mean only a minimal commitment of time and energy for a very big improvement in our local environment!!!

If you would like to joining the NW scheme, or would just like a little more information about what would be involved, please contact Louise on 01359 251066 or the Clerk on 01359 250037



Hepworth Weather (as measured on The Street)

	Max. Temp:	10.6C	13th
January 2019:	Min. Temp:	-5.9C	19th
	Total Rainfall:	18.6mm	
	Wettest Day:	4.7mm	29th

	Max. Temp:	18.6C	27th
February 2019:	Min. Temp:	-3.8C	2nd
	Total Rainfall:	20.4mm	
	Wettest Day:	5.4mm	3rd

January 2019: A cold but very dry month. The driest January at this station since records began in 2010. Barometer exceptionally 'high' on the 3rd. No severe cold but some snowfall, (1cm on the ground, 30th,31st). Wind gust of 53 mph on the 27th, associated with low pressure moving east over the North Sea.

February 2019: A dry and very mild month. Little snow and cold and with an absence of easterly winds. Remarkable spell of very sunny and exceptionally mild weather between 21st and 27th, where max. temperatures were at or exceeded 15C and to 18.6C on the 27th. Sunshine averaged 8 to almost 10 hours daily.

Unprecedented in its persistence of sun and daytime warmth for a winter month at this station.

Kindly provided by Richard Hinton. See the latest weather and historical Hepworth weather data at <http://j.mp/HepworthWS>



DOG FOULING

The Parish Council have once again received complaints about dog fouling in the village, in particular in Dunhill Lane (By-way) from the bungalow on the corner up towards the Wood Lane footpath.

No Fouling

Please be reminded that the penalty for not clearing up dog fouling can be up to £1,000 if taken to court, but there is also provision for a fixed penalty scheme with a fine of £50 in England.

Dog Bins are provided in the village along The Street, at the back of Church Close and outside the Pavilion - you also have the option to take it home!



Benefice Services

Maundy Thursday Evening

18th April 7.30pm Stanton

A quiet reflective service with Communion

Good Friday 19th April

2.00pm Last Hour Service, St Mary's Coney Weston

7.30pm A Service of Readings & Meditations, All Saints Hopton

Plus

The witness of the Cross Bike Ride

&

Hot Cross Buns Coffee and Craft at Stanton

Hepworth 2 Enjoy (H2E) has plans up its sleeve for more village fun later in the year, including:



Cheese and Wine Quiz Night - Saturday 8th June

Bingo and Buffet Evening - Saturday 14th September

If you would like to attend any of these events, please put the dates in your diary, and tell your friends!

If you have any other ideas of things you want to see being organised in the village, or you can help us make some of our plans reality, please contact Clare (250 660) or Sue (250 037) for more details of how to get involved in this fun and friendly village group.



RICKINGHALL & DISTRICT COMMUNITY TRANSPORT

A huge 'thank you' to the numerous organisations which so generously donate to our community bus thus ensuring its future operation. Also, to the special

people who fundraise and donate so generously.

A special 'thank you' to the parish councils of Redgrave, Botesdale, Rickinghall, Wattisfield, Hepworth and Stanton which ring-fence funds on an annual basis to ensure a replacement vehicle when necessary.

From all the people who use and need the bus, again, thank you.
Gordon Lawrence - Community Bus Co-ordinator - Tel : 01379 897109

Come and join fellow villagers for a
Fish (or Chicken) and Chip Supper



27th April 2019

Arrive 1830 for 1900

Hepworth Pavilion - **£10 per person**

All Welcome

Also pub games including
Skittles, Darts, Shove halfpenny



For more details please phone
Maureen Bacon on 01359 254054

NEED A Grand Design?

WANT TO RENOVATE OR
EXTEND YOUR HOME?

- WE GUARANTEE WE WILL BEAT ANY GENUINE QUOTATION
- FULL DESIGN PLANNING FOR COUNCIL APPROVAL
- PROJECT MANAGEMENT WHILST ON SITE
- ARCHITECTURAL TECHNICIAN
- LISTED BUILDING CONSENT APPLICATIONS
- BUILDING REGULATIONS DRAWINGS

CALL US NOW ON

01359 232507 / 07827 683 702

LEWISMN521@GMAIL.COM

WWW.MNLDESIGNS.CO.UK

5 HEATHER CLOSE, THURSTON, BURY ST EDMUNDS, SUFFOLK IP31 3PX

Tripp Batt *Garden Machinery*

Garden Machinery

Sales - Service - Repair

Petrol - Electric - Cordless - Robotic

Mon - Sat 8.30am to 6pm Sundays 10am - 4pm

Find us at

Marlows Home & Garden - Bury St Edmunds, IP32 7AP

trippbattstore.com Tel. 01284 763155



G HUBBARD

BUILDING & GROUNDWORKS

25 YEARS EXPERIENCE

**NEW BUILDS, EXTENSIONS,
PLASTERING, TILING, ROOFING,
FACIAS AND GUTTERING,
RE-POINTING, CONCRETING,
LANDSCAPING, PATIOS,
DRIVEWAYS, FENCING, GATES ETC**

Free Quotes

Call Gavin

07899 835781 01359 252311

Deadline for all copy (contents and adverts) for the June edition of Hepworth Herald is 17th May 2019. Please email all requests to hepworthherald@gmail.com

Hepworth Pavilion and Recreation Ground

Church Lane, IP22 2PU



Hall Hire:

£25 (€30) for an evening

£15 (€20) for afternoon or morning

£40 (€45) for afternoon + evening

£50 (€60) for all day.

Prices in brackets are for non-Hepworth residents.

Special prices available for regular or short hirings.

The Recreation Ground Committee reserve the right to decline a booking. Bookings and Enquiries 01359 250 048

Would you like an Advert here?

Reach more than 550 people in 250 households in the village of Hepworth, and help support our village magazine.

	B&W	Colour
¼ Page	£15 (€6)	
½ Page	£30 (€11)	£45 (€16)
Full Page	£60 (€21)	£75 (€26)
Back Cover		£90 (€32)
Centre Spread	£90 (€32)	£120 (€45)

Prices are for 3 consecutive editions (prices in brackets for 1 issue)
email: hepworthherald@gmail.com



Glamping and
Camping
Alpaca walks
Alpaca yarn

Find out more at
<http://lingsmeadow.co.uk>
<http://alpacas.lingsmeadow.co.uk>

Contact - Kath Shearer
Stanton Rd Farm, North Common,
Hepworth IP22 2PR
(01359) 250594

Plant & Digger Hire
Driveways And Patios
Footings & Oversights
Drainage
Septic Tank Installation
Extensions
Bricklaying
Concreting
Decking
Fencing
Landscaping
Ponds & More...

Construction Solutions

**NO PROBLEMS
JUST SOLUTIONS**

**07789 995851
01379 890820**

robertpratt5@hotmail.co.uk



WATERSON PLUMBING AND HEATING

OIL INSTALLATIONS, SERVICE AND REPAIR

-

OIL TANK SUPPLY AND INSTALLATION

-

CENTRAL HEATING INSTALLATION AND UPGRADES

-

UNVENTED HOT WATER SYSTEM INSTALLATION AND REPAIR

-

COMPLETE BATHROOM INSTALLATION

-

GENERAL PLUMBING

-

REGISTERED TECHNICIAN #28970

-

01359 760 528 OR 07828 639 138

JEREMY@WATERSONPLUMBING.COM

Boutique Groomer & Luxury Home Boarding



Michelle Waterson

BARKING MAD @ HEPWORTH



THE OLD DAIRY
THE STREET
HEPWORTH
IP22 2PS
01359 760528
07828767548



barkingmad@mail-me.com



barkingmad@hepworth